

Checking Your Tyres

Before checking:

1. Ensure you have a tyre tread depth gauge or at least a 20p coin.
2. Ensure you have a tyre pump in the car. You should run this using the car lighter when the car is running otherwise you may flatten your battery.
3. Tyres have date codes on them to see how old they are. Most tyres need to be replaced between 5-10 years even if they haven't been used much because they are made of rubber and rubber deteriorates.
4. If one side of your tyre is worn more than the other, you probably need to have your wheels aligned.
5. Tyres with a tread of 1.6mm deep are illegal and dangerous. You really want to change tyres before this point.

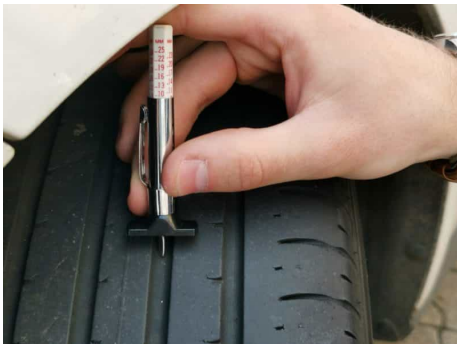


You can use the border depth around the edge of a 20p coin to test the tread on your tyre.

If the inner part of the coin's border is below the top of the tyre's tread, you have good tread.

Each tyre should have a tread wear indicators as well to help you see how much tread you have left.

If there are flush with the top of the tread, you need new tyres.



This tyre tread depth gauge is checking the tread at the centre of the tyre.



If you place the 20p in the lowest part of the tread in the centre of the tyre, you will see if the tread is above the inner part of the border.

This tyre to the left is almost at the top of the inner border of the 20p coin. It does not have many miles left in it before it needs to be replaced.

If this was a tyre condition in wintertime, it would probably be a good idea to replace them immediately.

A brand-new tyre will usually come with 8mm depth of tread. The 20p's border is around 3mm thick.

In the picture to the right, you can see the built in tyre depth gauge. They are almost flush with the highest part of the tread.



The tyre in these examples is very cracked. This is the rubber deteriorating.

You also need to check all the way round the tyre and both sides to check for gashes, large cracks, bulges, etc. Anything like this and the tyre needs to be replaced.

If you find a nail in your tyre, do not remove it. Take it to a reputable tyre place so they can repair it unless it is in the tyre wall (side). A repair is cheaper than a new tyre. At the time of writing this, a puncture repair is usually £15-30.